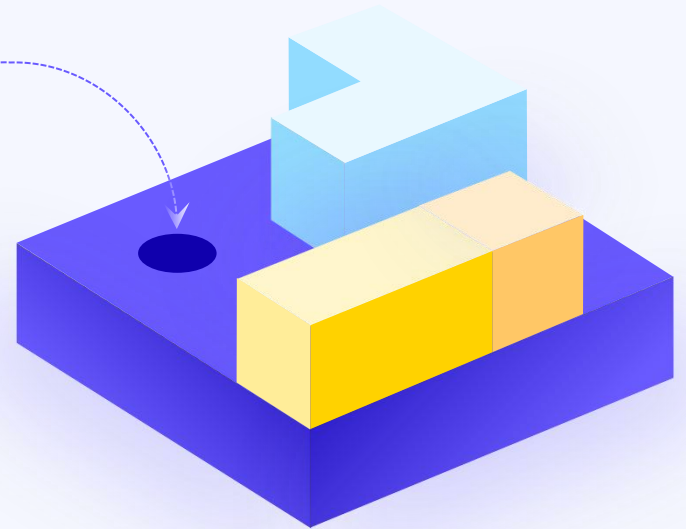


# Hotel Reservation Recommendations



CTEF Organizing  
Committee

All hotels include daily breakfast





Hotel lobby



Double Room



Twin Room

**Five Star**

# Shanghai Himalaya

## Hotel



**No. 1108, Meihua Road, Pudong New Area, Shanghai**

**From Shanghai New International Exhibition Center: 613m**

**(Drive for 2 minutes)**

**Price: 800RMB**

**\*Including round-trip shuttle bus service between the hotel and the exhibition hall**



Hotel lobby



Double Room



Twin Room

# Five Star Shanghai Pudong Star Harbor Hotel

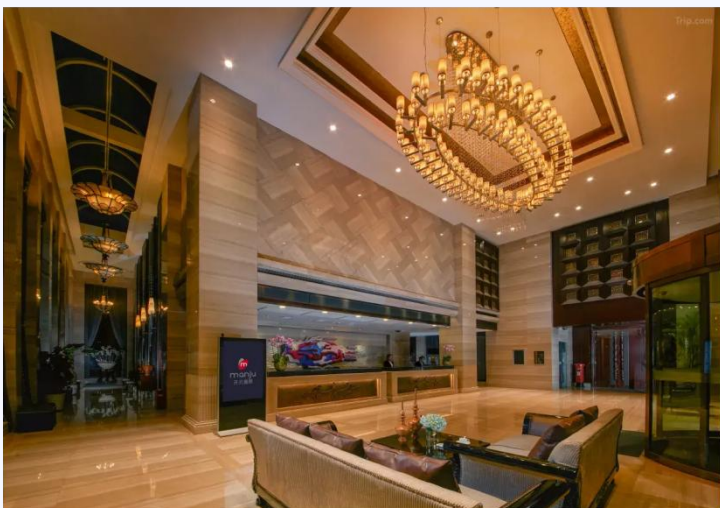
 No. 2588, Jinxiu Road, Pudong  
New Area, Shanghai

From Shanghai New International  
Exhibition Center: 3.6km

(Drive for 10 minutes)

Price: 800RMB

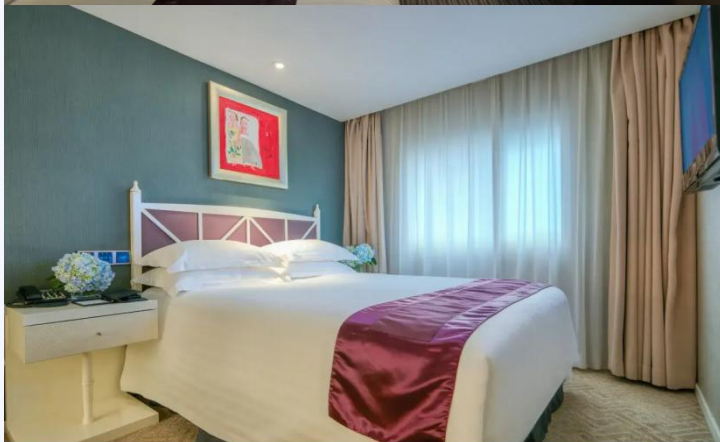
**\*Including round-trip shuttle bus service  
between the hotel and the exhibition hall**



Hotel lobby



Double Room




Twin Room

**Four Star**

# **Manju Hotel**

## **(Shanghai New International Expo Center Branch)**

Price: 600RMB

 **No. 1609, Luoshan Road, Pudong  
New Area, Shanghai**

**From Shanghai New International  
Exhibition Center: 1.7km  
(Drive for 7 minutes)**

**\*Including round-trip shuttle bus service  
between the hotel and the exhibition hall**



Hotel lobby



Double Room



Twin Room

Four Star

# Shanghai Lujiazui

# Lichen Hotel

Price: 600RMB

 **No. 568 Nanxiangjing Road,  
Pudong New Area, Shanghai**  
**From Shanghai New International  
Exhibition Center: 2.7km**  
(Drive for 10 minutes)

**\*Including round-trip shuttle bus service  
between the hotel and the exhibition hall**



Hotel lobby



Double Room



Twin Room

**Four Star**

# Shanghai Lujiazui

## Wanxin R Hotel

Price: 600RMB

 **No. 688, Guishan Road, Pudong  
New Area, Shanghai**

**From Shanghai New International  
Exhibition Center: 3.4km  
(Drive for 12 minutes)**

**\*Including round-trip shuttle bus service  
between the hotel and the exhibition hall**



Hotel lobby



Double Room



Twin Room

**Four Star**

# **Shanghai New International Exhibition Center**

## **Shundi Sanhe Yuan Hotel**

Price: 600RMB

 **Chengshan Road 2599 Lane,  
Pudong New Area, Shanghai**

**From Shanghai New International  
Exhibition Center: 3.8km  
(Drive for 14 minutes)**

**\*Including round-trip shuttle bus service  
between the hotel and the exhibition hall**



Hotel lobby



Double Room



Twin Room

**Four Star**

# **Shanghai Zunmao Hotel**

## **(Sixth Avenue Branch)**

Price: 600RMB

 **No. 357, Songlin Road, Pudong  
New Area, Shanghai**

**From Shanghai New International  
Exhibition Center: 5km  
(Drive for 13 minutes)**

**\*Including round-trip shuttle bus service  
between the hotel and the exhibition hall**



Hotel lobby



Double Room



Twin Room

**Four Star**

# **Pudong Futai Hotel**

**(Shepu Road Metro Station  
Branch)**

Price: 600RMB

 **No. 2333, Pudong Avenue, Pudong  
New Area, Shanghai**

**From Shanghai New International  
Exhibition Center: 5.1km  
(Drive for 14 minutes)**

**\*Including round-trip shuttle bus service  
between the hotel and the exhibition hall**



Hotel lobby



Double Room



Twin Room

Three Star

# Shanghai Jinqiao Center Choice Hotels

Price: 400RMB

 No. 1359, Jinqiao Road, Pudong  
New Area, Shanghai

From Shanghai New International  
Exhibition Center: 7km  
(Drive for 15 minutes)

\*Including round-trip shuttle bus service  
between the hotel and the exhibition hall